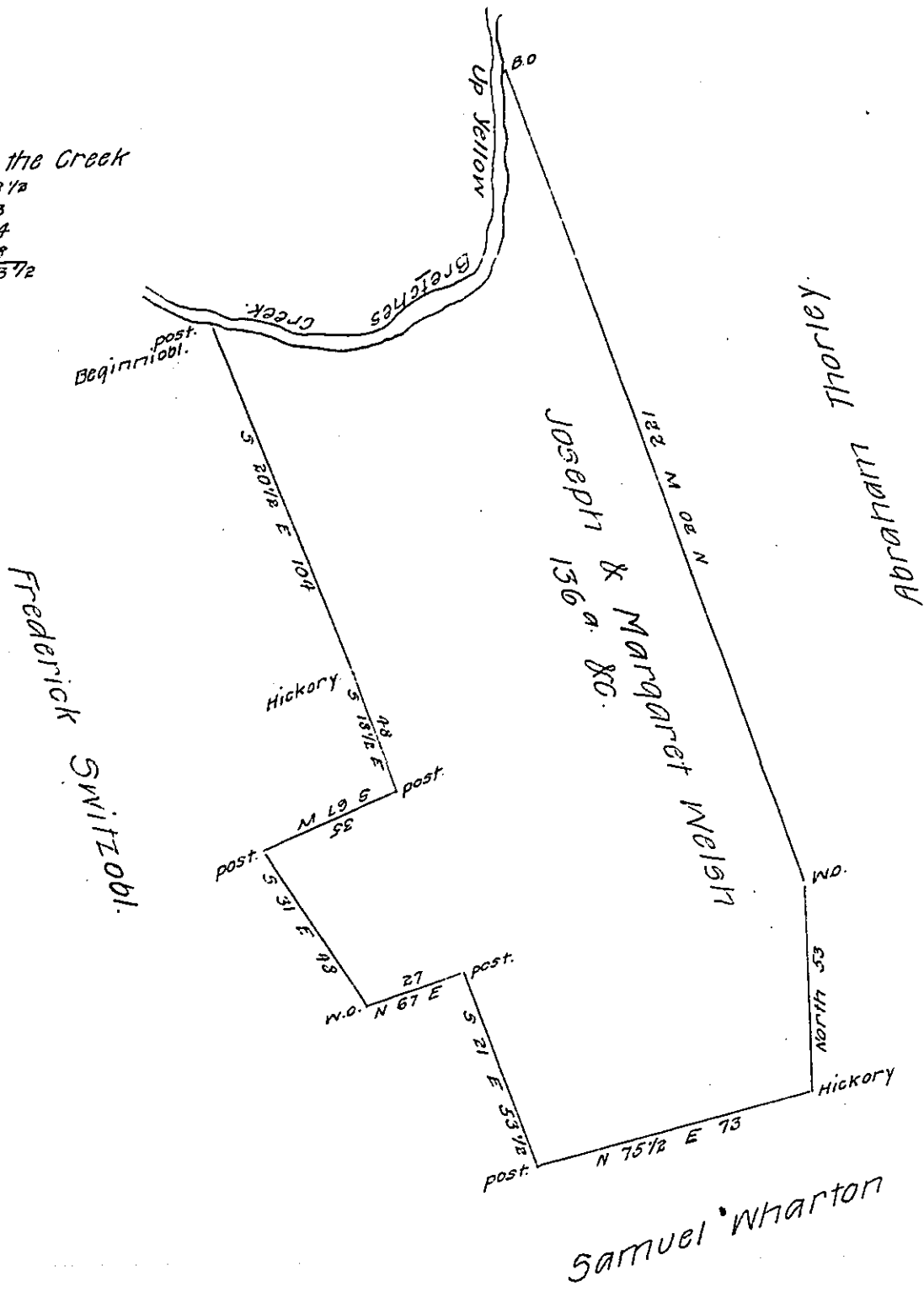


FORM NO. 1.

N. B. Courses up the Creek  
 S 2 W 48 1/2  
 S 60 W 43  
 N 77 W 34  
 N 78 W 8  
 135 1/2



A Draught of a tract of land situate in Newbury township in the County of York Surveyed the 20th September 1785 in Pursuance of two Warrants one in the Name of Joseph Welsh and one in the Name of Margaret Welsh both dated the 10th day of February 1775. Containing One Hundred and Thirty six acres and the Allowance of six acres P Cent for roads

John Forsyth D.S.

To Daniel Brodhead Esq<sup>r</sup>  
 Surveyor General.

IN TESTIMONY that the above is a copy of the original remaining on file in the Department of Internal Affairs of Pennsylvania, made conformably to an Act of Assembly approved the 16th day of February 1833, I have hereunto set my hand and caused the Seal of said Department to be affixed at Harrisburg, this eighth day of June 1907.

*Henry Howell*  
 Secretary of Internal Affairs.